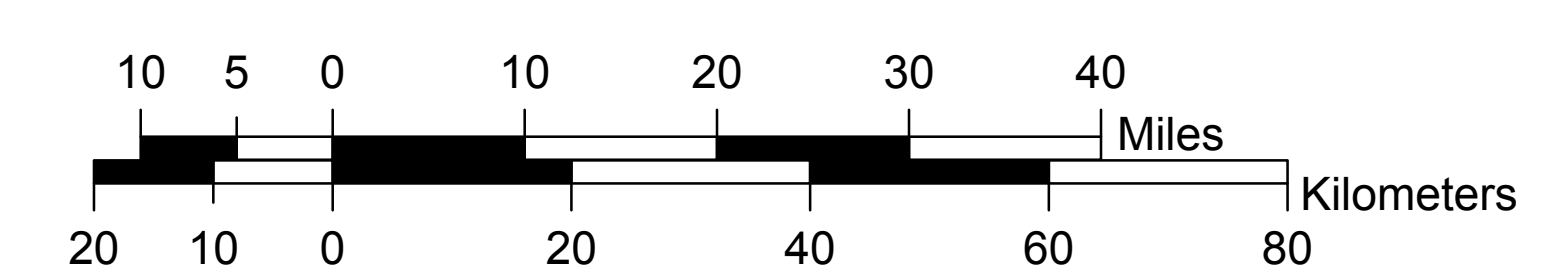


LOUISIANA

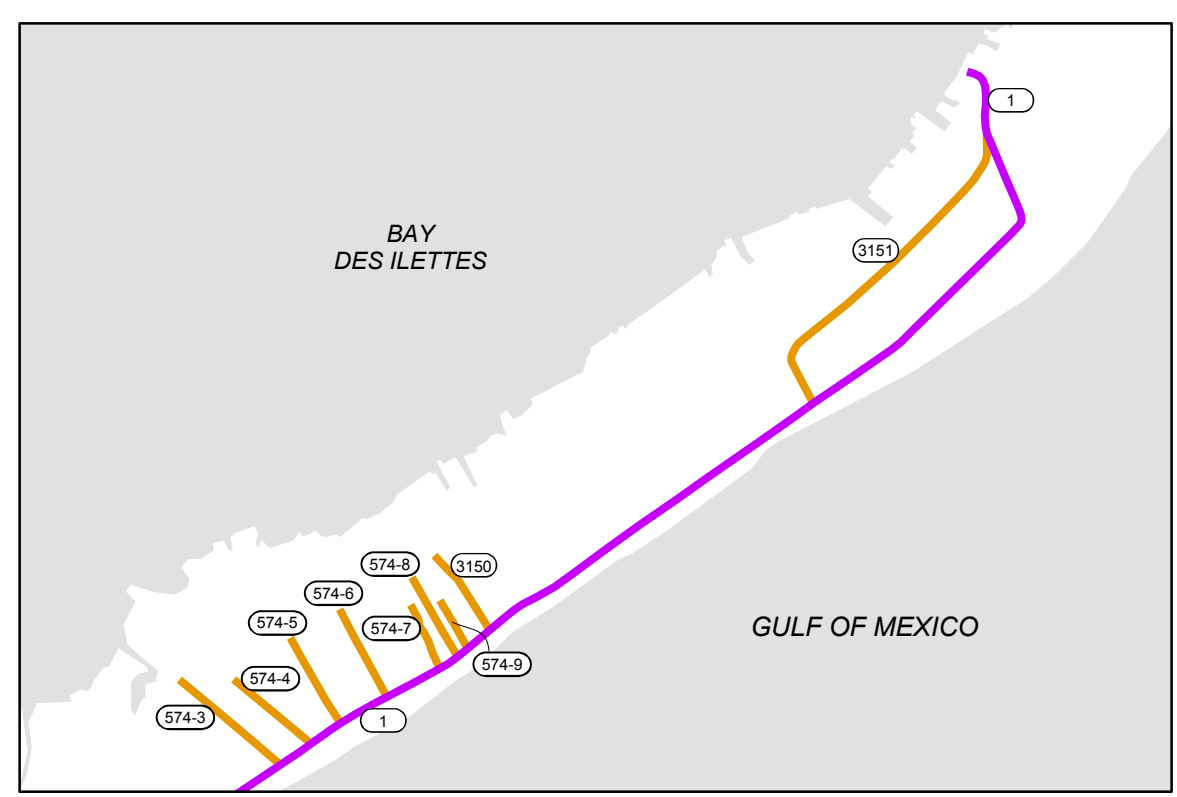
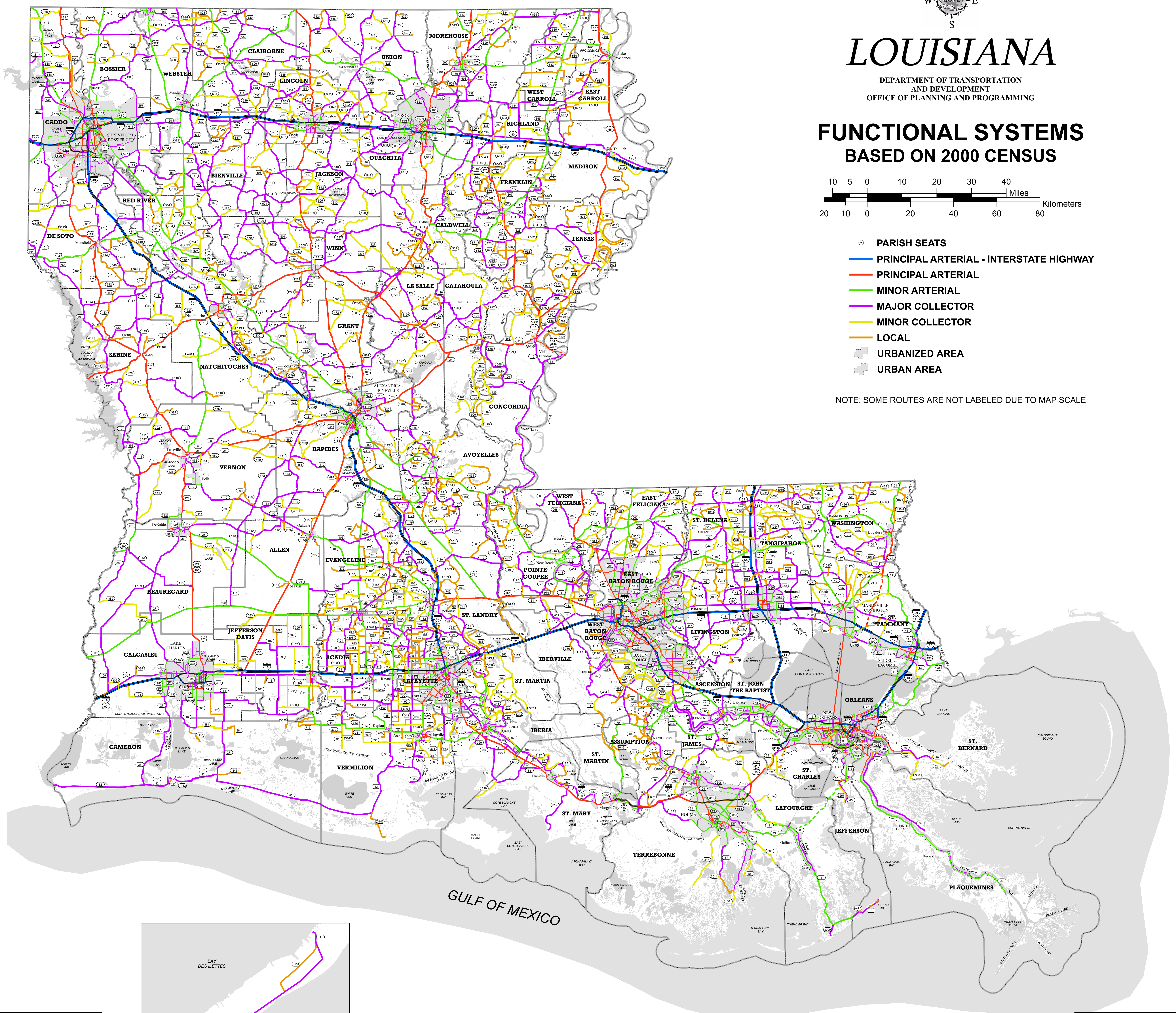
DEPARTMENT OF TRANSPORTATION
AND DEVELOPMENT
OFFICE OF PLANNING AND PROGRAMMING

FUNCTIONAL SYSTEMS BASED ON 2000 CENSUS



- PARISH SEATS
- PRINCIPAL ARTERIAL - INTERSTATE HIGHWAY
- PRINCIPAL ARTERIAL
- MINOR ARTERIAL
- MAJOR COLLECTOR
- MINOR COLLECTOR
- LOCAL
- URBANIZED AREA
- URBAN AREA

NOTE: SOME ROUTES ARE NOT LABELED DUE TO MAP SCALE



GRAND ISLE

DATA ON THIS MAP IS INTENDED FOR INTERNAL PLANNING USE ONLY. ALTHOUGH THIS DATA HAS BEEN SUBMITTED TO MANY RIGOROUS TESTS - ALL WITH EXCELLENT RESULTS - NO WARRANTY, EXPRESSED OR IMPLIED, IS MADE AS TO THE ACCURACY OF THE DATA NOR SHALL THE FACT OF DISTRIBUTION CONSTITUTE ANY SUCH WARRANTY. DOTD ASSUMES NO LIABILITY FOR ANY CONNECTION THEREWITH AND ASSUMES NO RESPONSIBILITY TO DISTRIBUTE FUTURE MODIFICATIONS OR CORRECTIONS THAT MAY BE MADE TO THIS DATA.

PROJECTION: NAD_1983_UTM_Zone_15N
TRANSVERSE MERCATOR
False_Easting: 500000.000000
False_Northing: 0.000000
Central_Meridian: -93.000000
Scale Factor: 0.999999
Latitude_of_Origin: 0.000000

HORIZONTAL DATUM: NORTH AMERICAN DATUM OF 1983
H:\2000\map16\dotd\arcview\map\arc\Projects\Funcional\Class\State\FuncionalSystems_30x36.mxd
Map Date Revised: October 2006

THIS MAP HAS BEEN PREPARED BY THE LOUISIANA DEPARTMENT OF TRANSPORTATION AND DEVELOPMENT OFFICE OF PLANNING AND PROGRAMMING. COPIES OF THIS MAP ARE AVAILABLE FOR PUBLIC USE AT A NOMINAL COST.

REPRODUCTION OR ALTERATION WITHOUT PERMISSION OF THIS OFFICE IS PROHIBITED. ALL DOCUMENTS AND REPORTS CONTAINING INFORMATION OBTAINED FROM THIS OFFICE ARE TO BE KEPT CONFIDENTIAL.

DEPARTMENT OF TRANSPORTATION AND DEVELOPMENT
GENERAL FILES - MAP SALES
BATON ROUGE, LA 70804-8045
(225) 759-1107